



## About LID at UConn

Low impact development (LID) is a practice used to reduce impacts of storm water runoff on water quality. As part of UConn's commitment to sustainability, LID practices have been implemented at numerous locations around campus. Such practices have potential to greatly reduce the impacts of the university on the quality of water in nearby streams and rivers.



## The LIDS Team



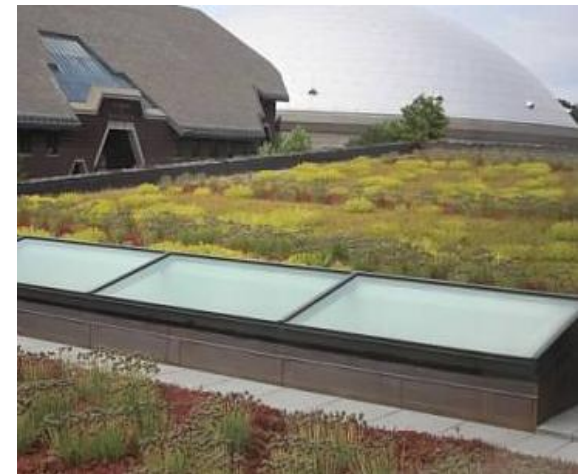
The LIDS Team is a part of the Natural Resources Conservation Academy. The dynamic group is comprised of five students and three mentors. Although the team members come from different corners of the state, they are united by a common purpose to inform the public on UConn's low impact development practices which reduces the campus' environmental footprint on Connecticut's waterways.

### Natural Resources Conservation Academy

Dept. of Natural Resources and the Environment  
University of Connecticut  
1376 Storrs Road U-4087  
Storrs, CT 06269  
nrca@uconn.edu

# Low Impact Development at UConn

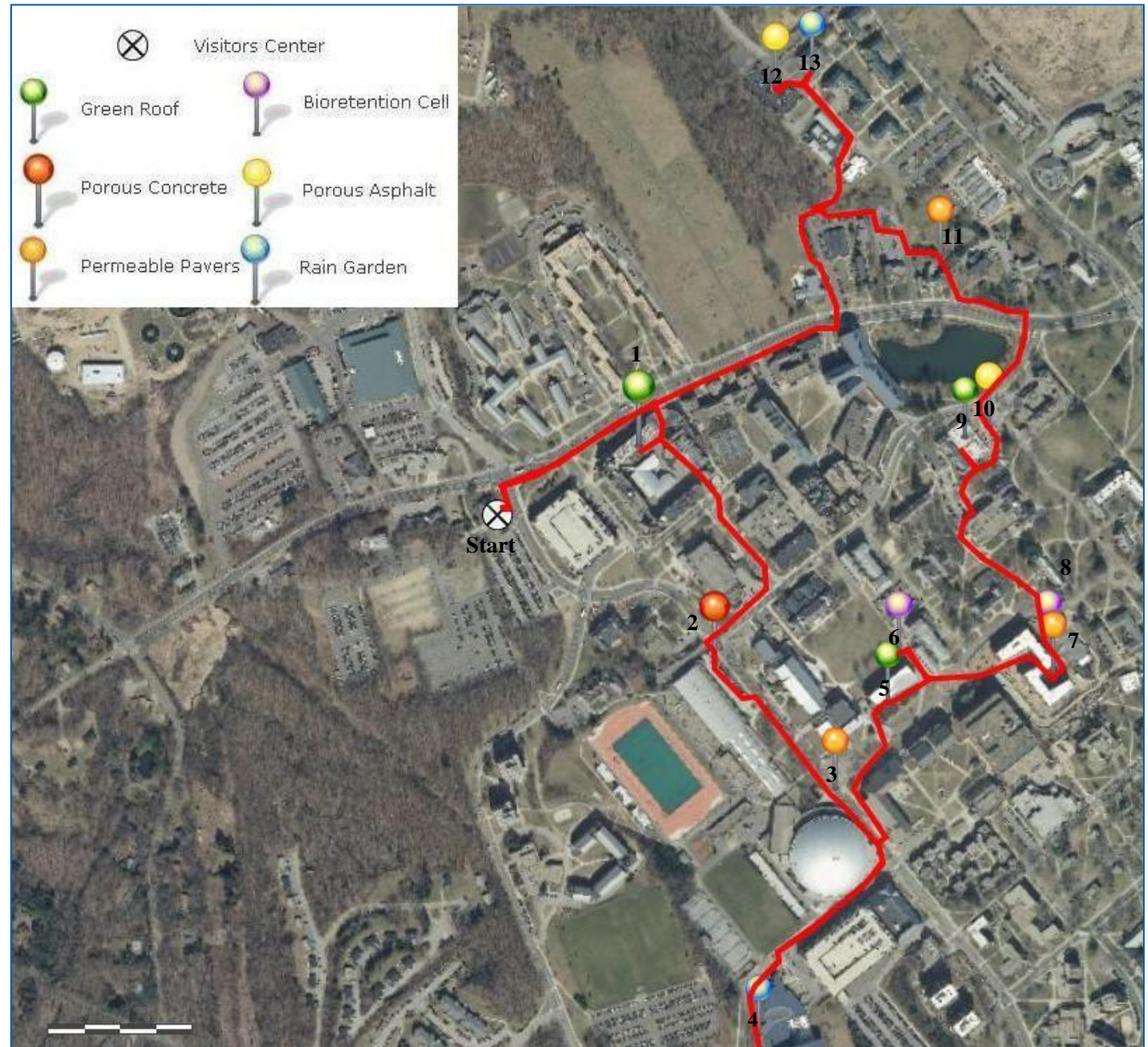
Protecting water quality through innovative practices



# Key to map

Starting Point: Visitor's Center

1. Gant Plaza Green Roof
2. Greer Field House Parking Lot
3. Gampel Pavilion Snow Shelf
4. Burton Family Football Complex
5. Laurel Hall Green Roof
6. Laurel Hall Bioretention cell
7. Oak Hall Permeable Pavers
8. Oak Hall Bioretention Cell
9. Storrs Hall Green Roof
10. Storrs Hall Permeable Asphalt
11. Lakeside Bldg Permeable Pavers
12. Towers Permeable Asphalt
13. Towers Rain Garden



LID practices have been implemented at many sites across the UConn campus. The above map illustrates a tour of twelve of these practices which include rain gardens, bioretention cells, green roofs, and permeable pavements. This tour of LID practices is 2.5 miles in length and should take approximately one hour. An interactive online version of this map can be found at <http://s.uconn.edu/lidmap>.